

Supplementary Material

Systematic Study of Boselaphine Remains from the Late Miocene of Hasnot, Pakistan

Muhammad Tahir Waseem¹, Abdul Majid Khan^{1*}, Saliha Khalid¹, Rana Manzoor Ahmad^{1,2}, Ayesha Iqbal¹, Muhammad Ameen¹

¹Department of Zoology, University of the Punjab, Lahore (54590)

²University of Okara, Punjab, Pakistan.

To cite this article: Waseem, M.T., Khan, A.M., Khalid, S., Ahmad, R.M., Iqbal, A. and Ameen, M., 2020. Systematic study of boselaphine remains from the late miocene of hasnot, Pakistan. *Punjab Univ. J. Zool.*, 35(1): 69-76. <https://dx.doi.org/10.17582/journal.pujz/2020.35.1.69.76>

Corresponding Author: Abdul Majid Khan, majid.zool@pu.edu.pk

Table SI1. Fossil yielding localities around the Hasnot from where samples for present study collected.

Sample No.	Locality
PUPC 15/384	L508
PUPC 15/381	L508
PUPC 15/388	L509
PUPC 17/418	L508
PUPC 15/382	L505
PUPC17/421	L501
PUPC 17/417	L509
PUPC17/419	L508
PUPC 17/420	L505
PUPC 17/418	L505
PUPC 15/383	L501
PUPC 15/389	L502
PUPC 15/385	L502
PUPC 15/387	L508
PUPC 17/423	L502
PUPC 15/386	L501
PUPC 10/26	L509
PUPC 17/422	L509

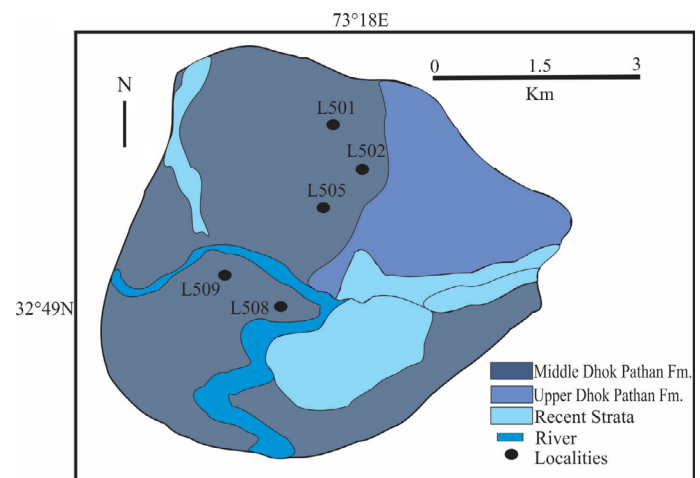


Fig SI1. Map of Hasnot and its localities (modified from Colbert, 1935). L represents locality.

References

Colbert, E.H., 1935. Siwalik mammals in the American Museum of Natural History. *Trans. Am Phil. Soc., N. S.*, 26: 1-401.